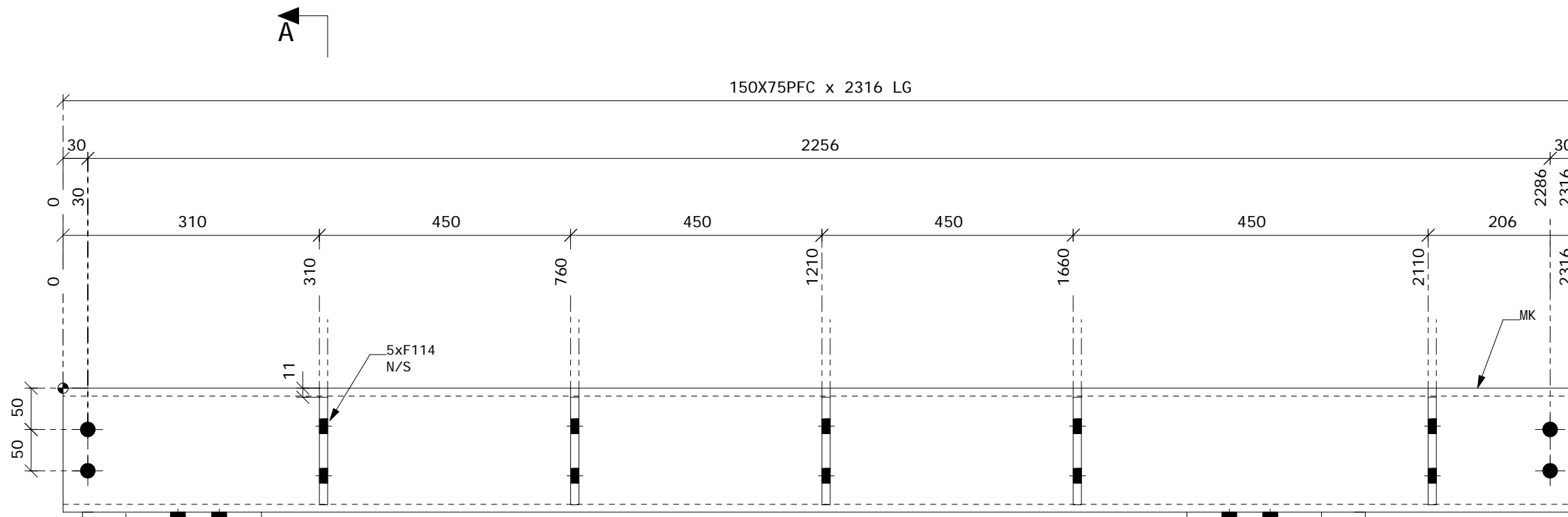
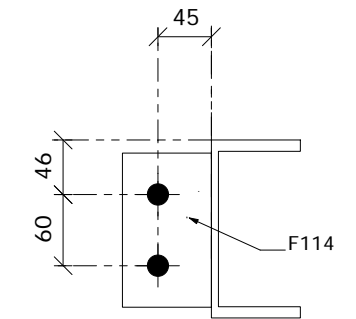


SHOP MATERIAL LIST FOR 1 MEMBER					
MARK	DESCRIPTION	GRADE	LENGTH MM	QTY	WEIGHT KG
B129	150X75PFC	300+	2316	1	41.0
F114	75X10FL	300+	130	5	3.8
F187	75X8FL	300+	230	2	2.2
TOTAL					47.0

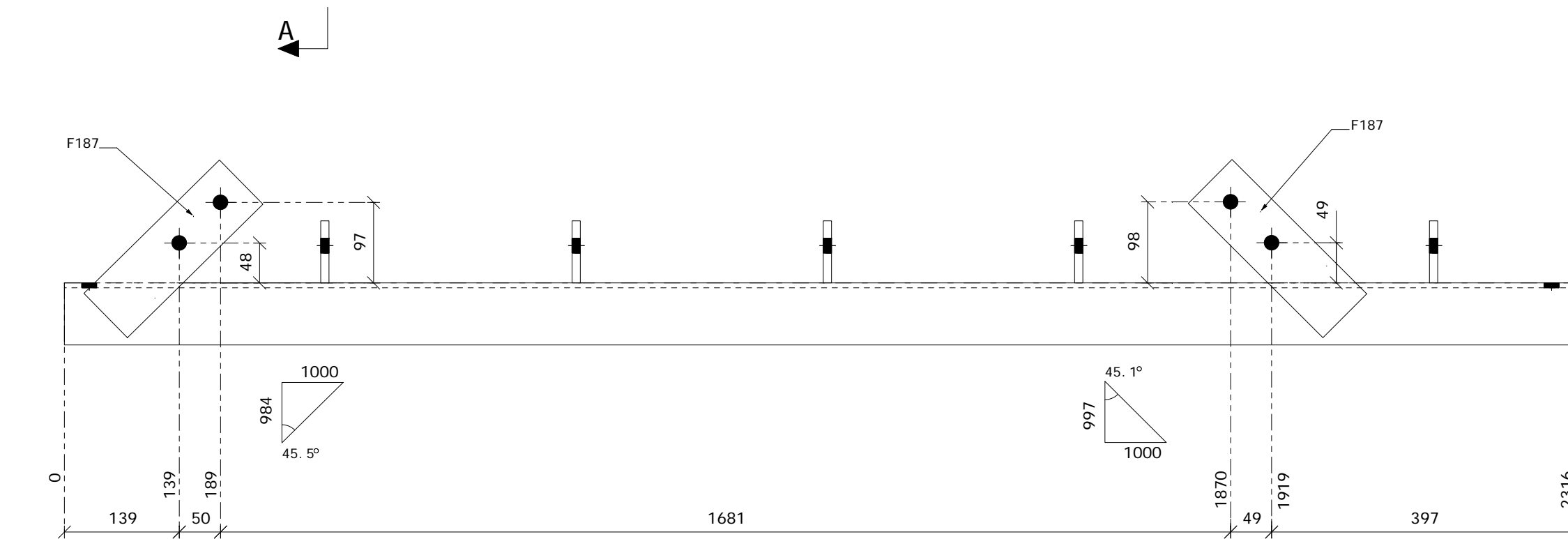


WEB HLS

N/S FIT.



SECTION A - A



B/FLG FIT.

1 BEAM(S) REQ'D AS DRAWN MARKED B129

FINISH RED-OXIDE

NOTES:
 ALL MEMBER HOLES TO BE 18 mm DIA UNO
 PAINT TOP COAT COLOUR IS
 *ALL STEELWORK WELDING & FABRICATION TO CONFORM TO CURRENT S.A.A CODES
 *ALL WELDS TO AS1554 - CAT. SP. U.O.N.
 *ALL WELDS TO BE 6mm FILLET U.O.N.
 *FOR HOLE SIZES IN FITTINGS REFER TO FITTING DRAWINGS.
 *ALL FITTINGS ARE LOCATED CENTRALLY U.O.N (BACK OF [IS ϕ)
 *ALL INTERNAL NOTCHES TO HAVE 11 RADIUS
 *SURFACE TREATMENT & PAINTING - REFER TO SPECIFICATION

JOB NUMBER:	
FAB'D BY:	
DATE ISSUED:	
CHECKED BY:	
DATE CHECKED:	
WELD ID:	

E		
D		
C		
B		
A		
REV	DATE	AMENDMENT

CLIENT	
--------	--

One Cad Pty Ltd
 POST OFFICE BOX 976
 MORLEY WA 6943
 PAUL 0468 854 831
 KERRY 0468 854 830
 ACN 115921876

PROJECT	MIXED USE DEVELOPMENT 23 RAILWAY RD SUBIACO	JOB NO.	
STRUCAD	BEAM DETAILS	DRG NO.	
SCALE	NTS	SHEET	A1
REV			