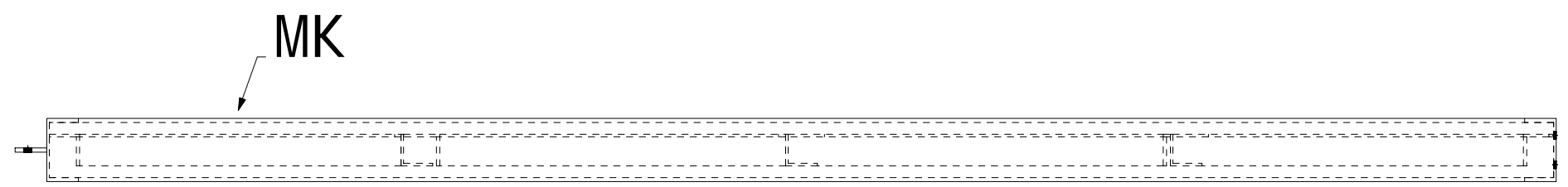
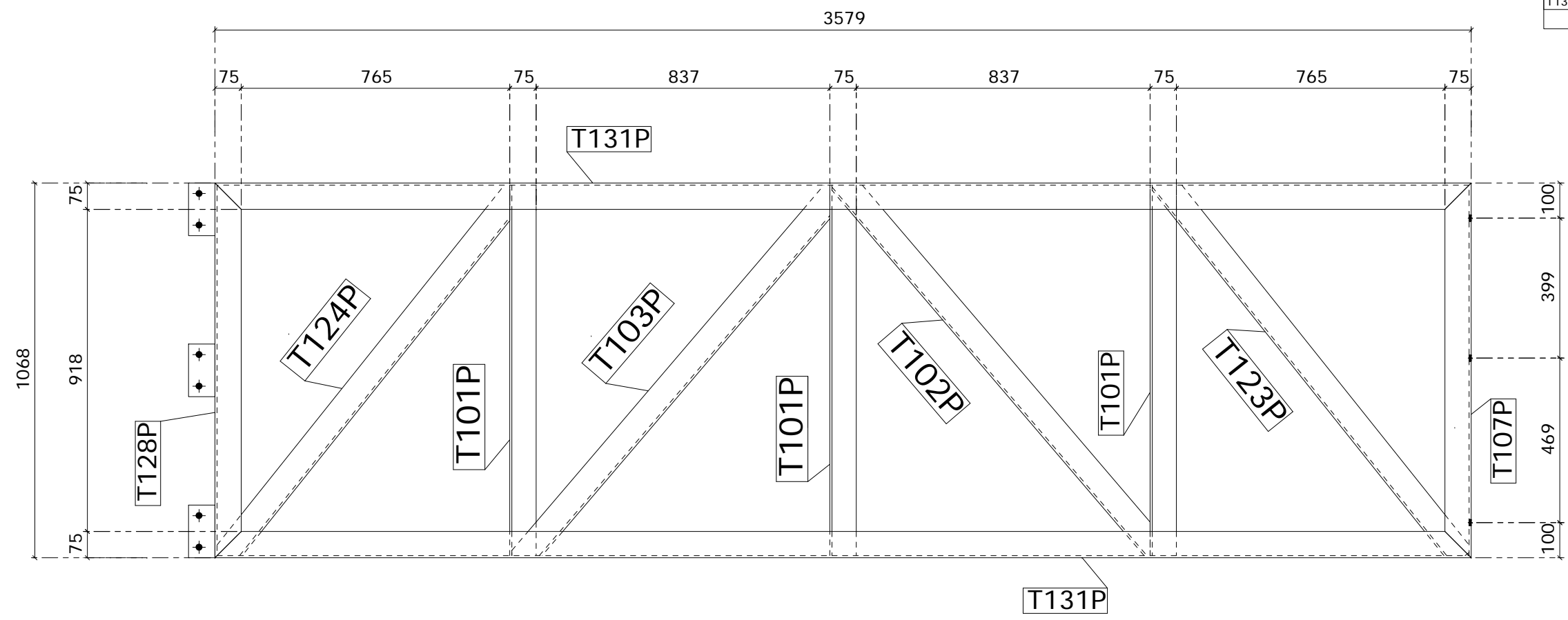


SHOP MATERIAL LIST FOR 1 ASSEMBLY						
MARK	DESCRIPTION	GRADE	LENGTH MM	QTY	SURFACE M2	WEIGHT KG
F127	75X10FL	300+	150	3	0.08	2.6
T101P	75X6EA	300+	1056	3	0.96	21.6
T102P	75X6EA	300+	1391	1	0.41	9.5
T103P	75X6EA	300+	1391	1	0.39	9.5
T107P	150X75PFC	300+	1068	1	0.61	18.9
T123P	75X6EA	300+	1381	1	0.40	9.4
T124P	75X6EA	300+	1346	1	0.38	9.2
T128P	150X75PFC	300+	1068	1	0.61	18.9
T131P	150X75PFC	300+	3579	2	4.17	126.7
TOTAL					8.00	226.2



1 ASSEMBLY(S) REQ'D AS DRN MARKED A113
FINISH RED-OXIDE

NOTE
1. THIS DRAWING IS AN ASSEMBLY ONLY AND NOT FOR CUTTING
2. REFER TO SUB-ASSEMBLY DRAWING FOR FABRICATION DETAILS

NOTES:
*ALL STEELWORK WELDING & FABRICATION TO CONFORM TO CURRENT S.A.A CODES
*ALL WELDS TO AS1554 - CAT. SP. U.O.N.
*ALL WELDS TO BE 6mm FILLET U.O.N.
*FOR HOLE SIZES IN FITTINGS REFER TO FITTING DRAWINGS.
*ALL FITTINGS ARE LOCATED CENTRALLY U.O.N (BACK OF [IS ☺)
*ALL INTERNAL NOTCHES TO HAVE 11 RADIUS
*SURFACE TREATMENT & PAINTING - REFER TO SPECIFICATION

JOB NUMBER:	
FAB'D BY:	
DATE ISSUED:	
CHECKED BY:	
DATE CHECKED:	
WELD ID:	

E		
D		
C		
B		
A		
REV	DATE	AMENDMENT

CLIENT	
--------	--

One Cad Pty Ltd
POST OFFICE BOX 976
MORLEY WA 6943
PAUL 0468 854 831
KERRY 0468 854 830
ACN 115921876

PROJECT	MIXED USE DEVELOPMENT 23 RAILWAY RD SUBIACO	JOB NO.	
ASSEMBLY DETAILS		DRG NO.	-
SCALE	NTS	SHEET	A1
REV			